



**BUMN** UNTUK  
INDONESIA

**PELINDO**  
TERMINAL PETIKEMAS

# COMPANY PROFILE PT TERMINAL TELUK LAMONG

NOVEMBER 2024



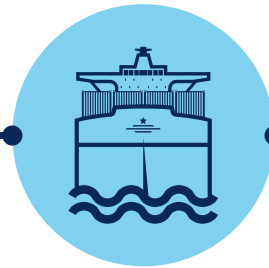
A State Owned Enterprise solely operating 110 Commercial Port Services throughout Indonesia.

- 32 Provinces
- 4 Regions
- 71 Branches
- 4 Sub holdings
- 140 Business Units
- 62 Subsidiaries
- 25,495 Employees



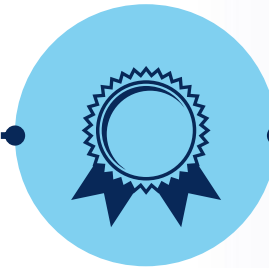
**2013**

Equipment procurement work contract



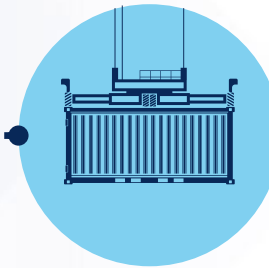
**2014**

first domestic container services MV Intan Daya 4



**2015**

President Joko Widodo inaugurated TTL & APBS revitalization



**2016**

Handover of additional Domestic STS units to TTL



**2024**

1 Mei 2024 Operation & maintenance hand over of Nilam Terminal to PT Terminal Teluk Lamong



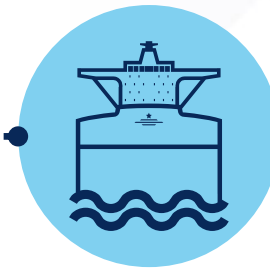
**2023**

1 November 2023 Transfer of PT TTL Shares on PT LEGI to PT Pelindo Maritime Services, & cooperation PT TTL - PT MTI for the operation of the truck fleet



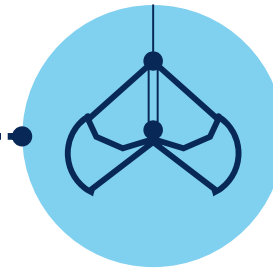
**2021**

2 December 2021 TTL share ownership was transferred to PT Pelindo Terminal Petikemas



**2019**

Serves the largest dry bulk cargo for the MV Nord Draco, TTL became single dry bulk service port officially



**2017**

Trial of dry bulk operations using conveyors and silos on the MV Giorgis

**DRY BULK QUAY**

- Length 250M
- 2 Unit GSU
- 2 Unit Shore Con

**DRY BULK STORAGE (7,32 Ha)**

Capacity **200.000 Ton:**

- 10 unit silo @8.000 ton
- 6 unit flat storage @20.000 ton

**FUTURE: ORU FACILITY**

- Onshore Regasification Unit (ORU) Facility
- Area: ± 2 Ha

**MAIN GATE**

**TRANSFER AREA**

- Area: + 3Ha

**MESIN PLTMG**

- Gas Engine 6,6 MW capacity

**FLYOVER TTL**

- Connecting TTL-Surabaya Western Outer Ring Road

**CONTAINER QUAY**

- Total **1.250m:**
  - 600M Domestic
  - 650M International
- 10 Unit STS
- Shore Con: 3 Dom, 3 Int
- Quay Draft -14 mLws

**CFS WAREHOUSE**

- Facility area ± 6.800M<sup>2</sup>

**EXISTING CONTAINER YARD (± 17Ha)**

- Capacity: 10 Block
- 20 Unit ASC & 2 Unit RTGC
- 90 Unit Trailer
- RS 5 Unit, SC 5 Unit, EH 1 Unit

**3<sup>rd</sup> PHASE CY (± 9 Ha)**

- Additional of 5 Block CY

**Main Office**

Total Capacity **1,4 Mio TEUS**  
2023 Actual Throughput **852 K TEUS**

# REMOTE OPERATING SYSTEM

TERMINAL TELUK LAMONG

- IMPROVING SAFETY ASPECT
- EACH OPERATOR COULD OPERATE UP TO 3 UNIT ASC
- IMPROVING PRODUCTIVITY



REMOTE OPERATING SYSTEM



**BULK ZONE**  
(± 26 Ha)

**PORT ASSOCIATED  
INDUSTRY (PAI) ZONE**  
(± 15 Ha)

**ENERGY  
TERMINAL ZONE**  
(± 9,3 Ha)

**TRANSFER AREA**  
(± 4 Ha)

**PAI ZONE**  
(± 35,2 Ha)

**BULK QUAY**

- 500 Meter Long

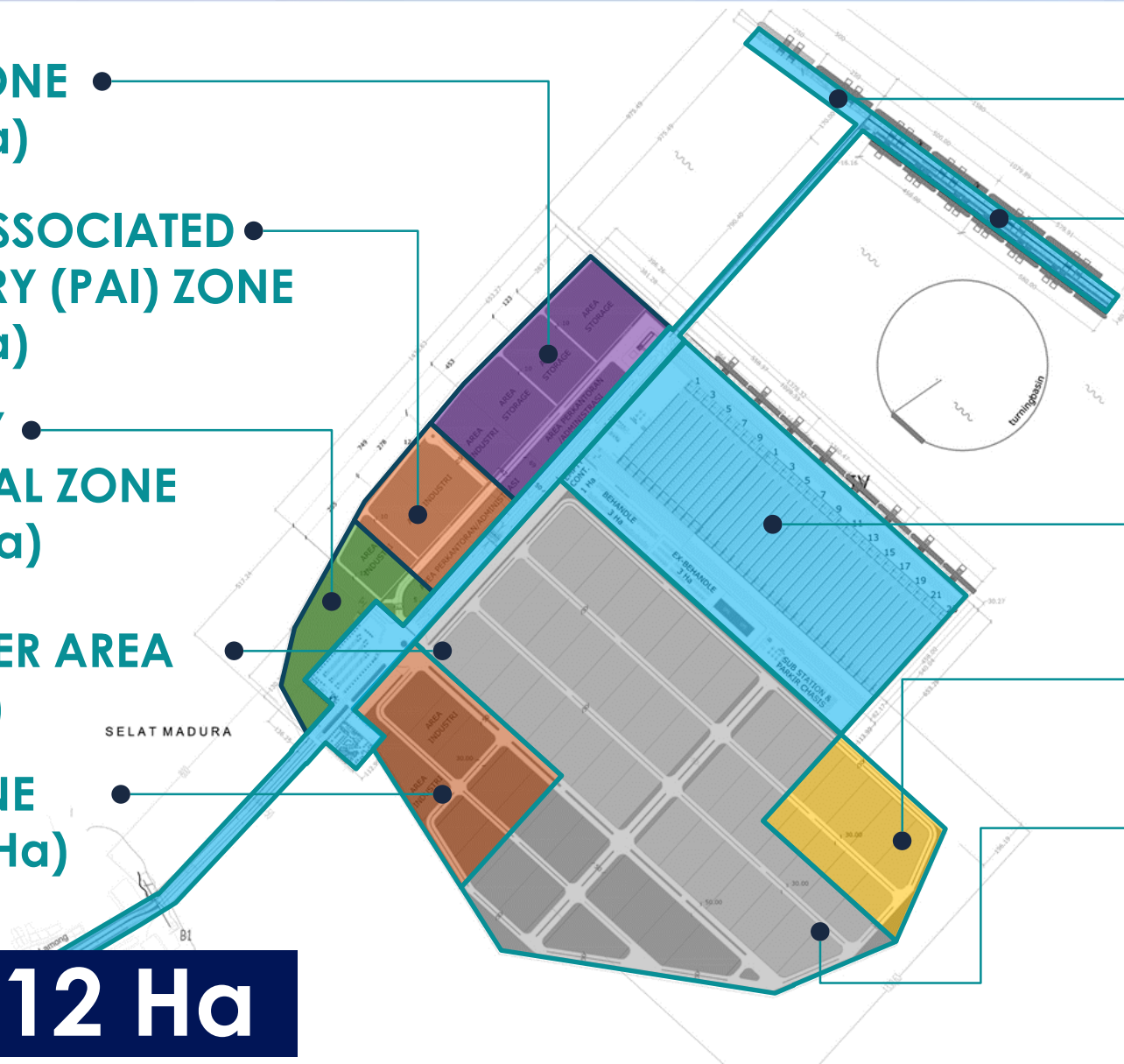
**CONTAINER QUAY**

- International 1080 Meter
- Domestic 1030 Meter

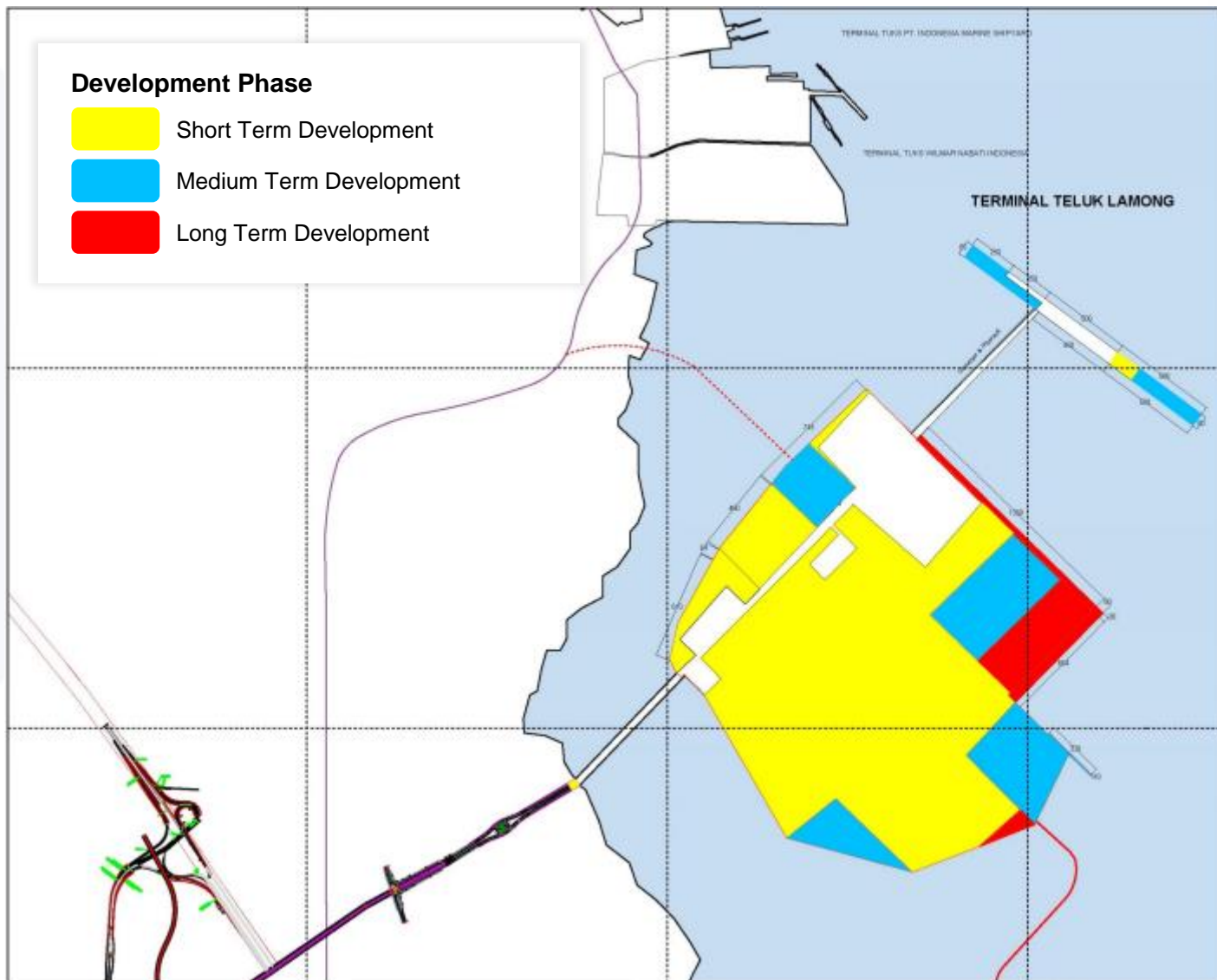
**CONTAINER ZONE**  
(± 88,9 Ha)

**GOVERNMENT AREA**  
(± 19,3 Ha)

**CONSOLIDATION,  
DISTRIBUTION, &  
LOGISTIC ZONE**  
(± 176 Ha)



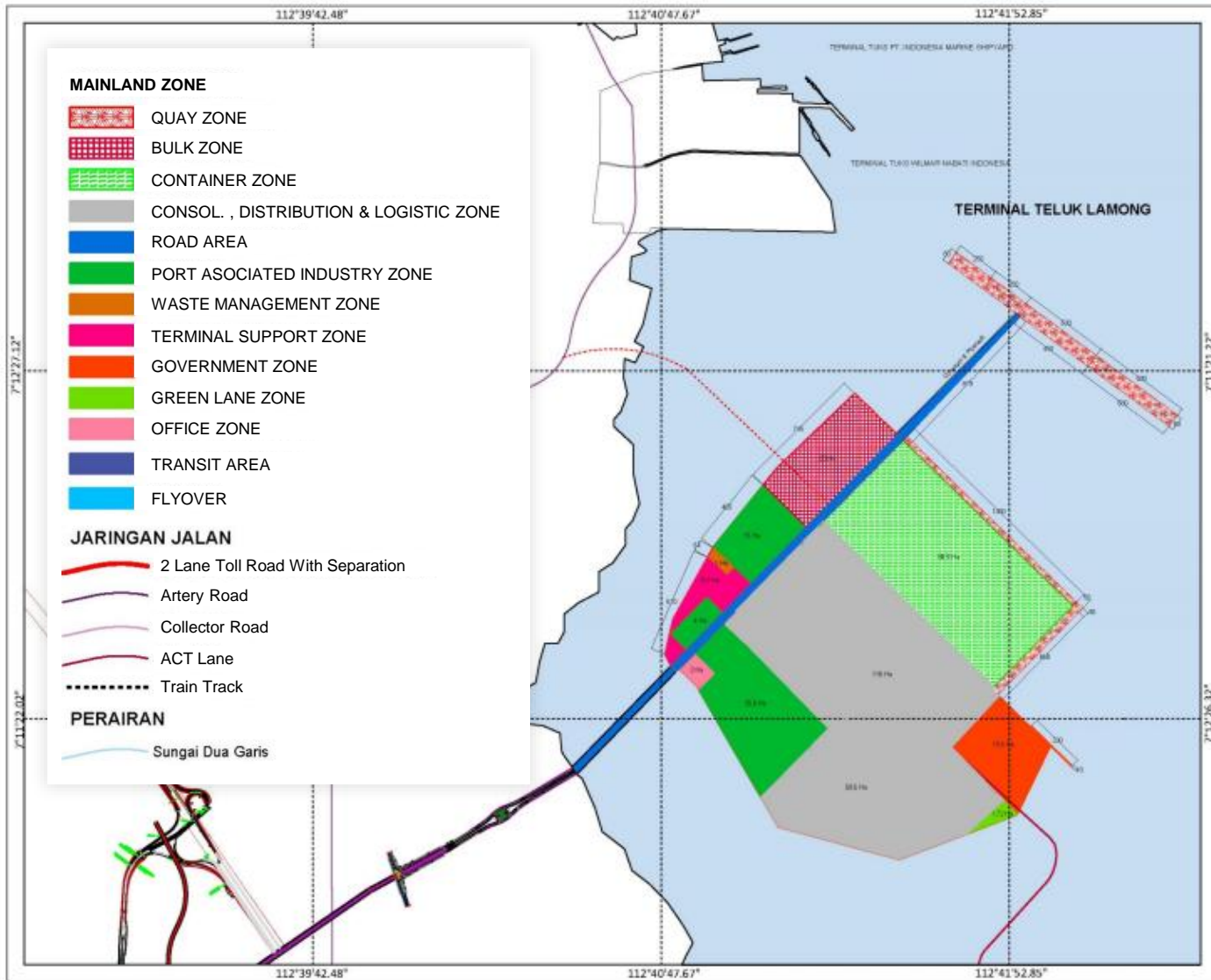
**TOTAL  
AREA 386,12 Ha**



**DEVELOPMENT PHASE**

Three phases of Terminal Teluk Lamong Development plan:

- **Short Term Development**  
2019 - 2023
- **Medium Term Development**  
2019 - 2028
- **Long Term Development**  
2019 - 2038



## Ultimate Phase Capacity: 3,6 Juta Teus

No.	Description	Unit	2018	Short Term 2019-2023	Medium Term 2019-2028	Long Term 2019-2038	Note
1	Container Quay						
	• Quay 1 (Inter)	m <sup>2</sup>	500 x 50	650 x 50	1.080 x 50	1.080 x 50	-
	• Quay 2 (Dom)	m <sup>2</sup>	450 x 30	600 x 30	1.030 x 30	1.030 x 30	-
	• Quay 3 (Dom)	m <sup>2</sup>				1.360 x 30	-
2	Government Quay	m <sup>2</sup>			330 x 10	330 x 10	-
3	Bulk Quay						
	• Bulk Quay	m <sup>2</sup>	250 x 30	250 x 30	500 x 80	500 x 80	-
	• LPG Quay	m <sup>2</sup>				668 x 50	-
4	Bulk Zone	Ha	14	15	26	26	
5	Container Zone	Ha	25	49	73,2	88,9	
6	Cargo Consolidation & Distribution Zone	Ha	8	165,4	175,6	175,6	
7	Road Facilities Zone	Ha	8,72	8,72	8,72	8,72	
8	Office Zone	Ha	2	2	2	2	
9	PAI Zone	Ha	-	50,6	54,6	54,6	
10	Waste Management Zone	Ha	-	1	1	1	
11	Energy Terminal Zone	Ha	-	8,3	8,3	8,3	Converted to Terminal Support Zone
12	Government Office Zone	Ha	-	-	19,3	19,3	
13	Transit Area Zone	Ha	5,3	4	-	-	Converted to PAI Zone
14	Green Lane Zone	Ha	-	-	-	1,7	



TERIMA KASIH

